



±7,326 sq ft 3rd floor office

390 Lytton Avenue, Palo Alto

- Downtown Palo Alto Class A building
- Full 3rd floor penthouse with views
- 16 secure underground parking spaces
- Walk to Caltrain, restaurants and business services
- New lobby interiors
- Fiber connection in building
- Extensive window line
- Call to tour
- **Available January 1, 2020**



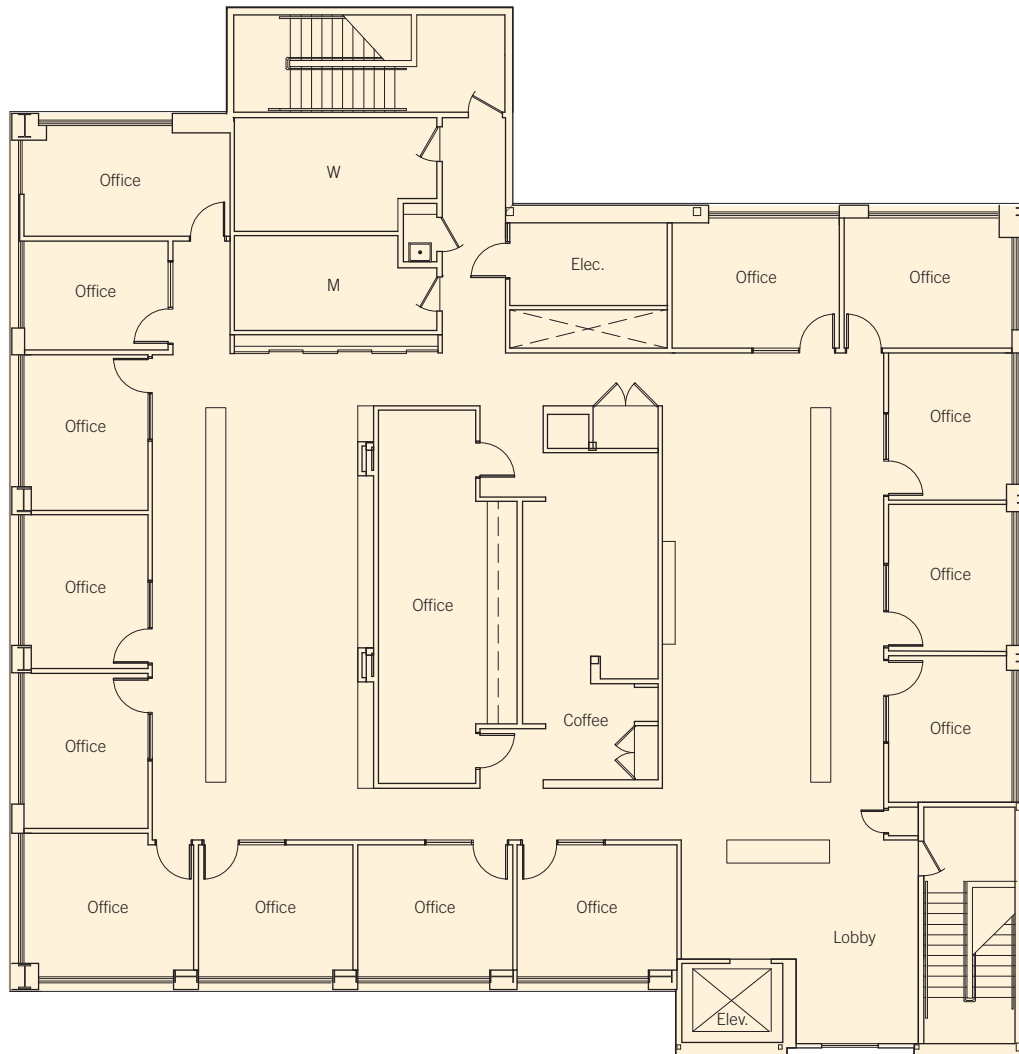
Leonard Ely III
650.321.3040
LEly@renault-handley.com
Lic. 01412521



Jon Goldman
650.618.3003
jon.goldman@prprop.com
Lic. 01295503

±7,326 sq ft 3rd floor office

390 Lytton Avenue, Palo Alto



Floor plans may not be to scale. The information contained herein has been obtained from sources we deem reliable. We have no reason to doubt its accuracy, but we do not guarantee it. All information should be verified prior to lease.

**Leonard Ely III**

650.321.3040

LEly@renault-handley.com

Lic. 01412521

**PREMIER
PROPERTIES**
COMMERCIAL
REAL ESTATE**Jon Goldman**

650.618.3003

jon.goldman@prprop.com

Lic. 01295503