

# Prime Downtown Menlo Park Office Space

873 Santa Cruz Avenue, Suite 200  
2,636 rentable sq ft

- High-profile corner location in the heart of Downtown Menlo Park
- Expansive windowline with floor-to-ceiling glass
- 4 private offices, 1 conference room, kitchen, open office areas
- Perfect for attorneys, VCs and other professional firms
- Second floor is elevator-served
- Surrounded by amenities; Peet's Coffee & Tea, Draeger's, Posh Bagel, Pharmaca and numerous other conveniences
- Walk to CalTrain
- Responsive local ownership and property management

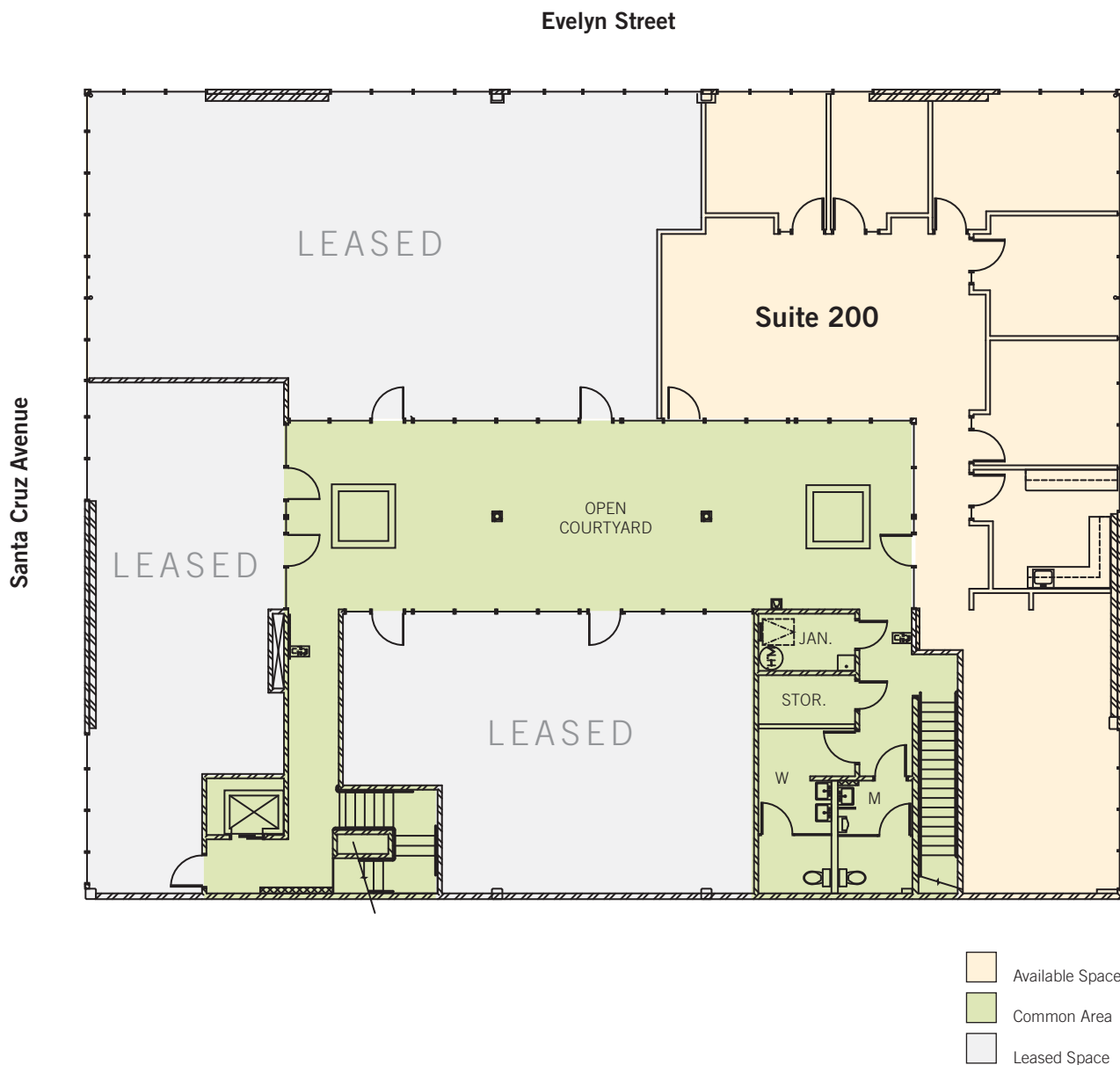


**Dave Conklin · Geordie McKee** 650.321.3040  
Lic. 01036562 Lic. 01257296

# Prime Downtown Menlo Park Office Space

873 Santa Cruz Avenue, Suite 200

2,636 rentable sq ft



Floor plans may not be to scale. The information contained herein has been obtained from sources we deem reliable. We have no reason to doubt its accuracy, but we do not guarantee it. All information should be verified prior to lease.

**Dave Conklin · Geordie McKee** 650.321.3040  
Lic. 01036562 Lic. 01257296