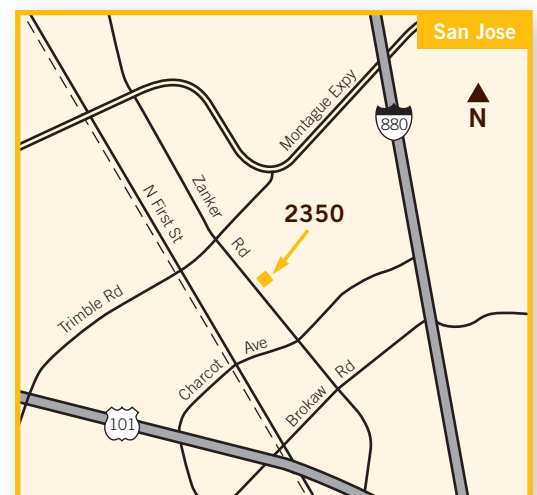




## ±50,330 sq ft office/R&D building for lease 2350 Zanker Road, San Jose

- **Substantial clear height and power for Life Science uses**
- Freestanding building on 3.05-acre site
- 70% office, 15% lab, 15% warehouse
- 100% HVAC
- Showers
- Heavy Power: 3600 amps @ 277/480 volt
- 24' maximum clear height
- Double-wide grade level loading door
- Utility pad
- 3/1000 parking
- Employee recreation field
- **Available immediately**

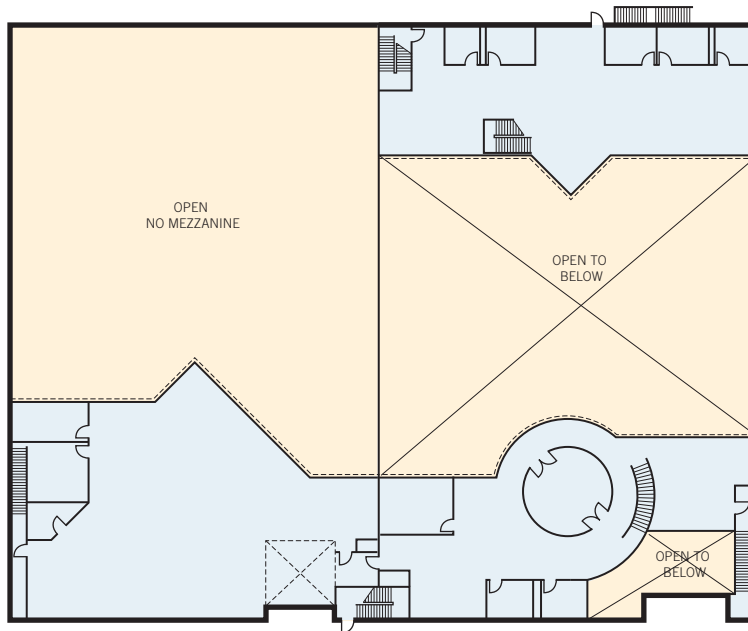


**Dave Conklin · Geordie McKee** 650.321.3040  
Lic. 01036562 Lic. 01257296

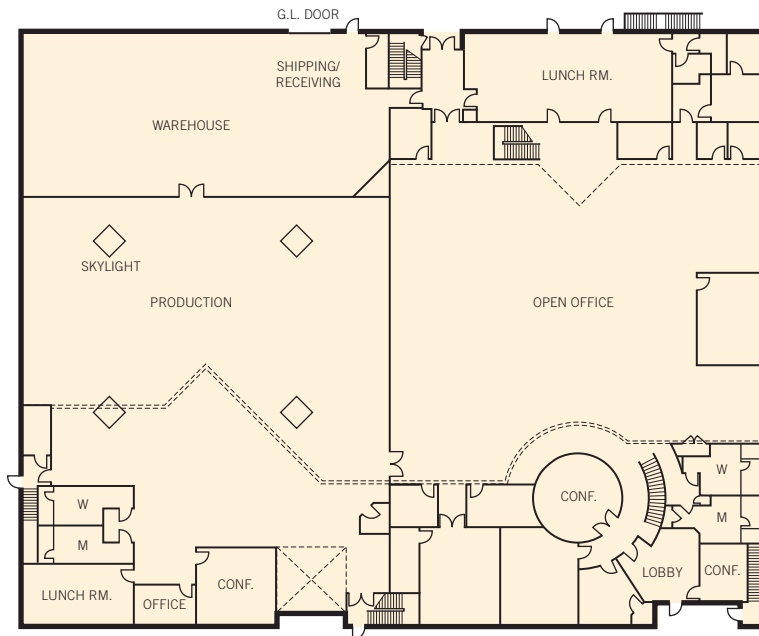
# ±50,330 sq ft office/R&D building for lease

## 2350 Zanker Road, San Jose

□ MEZZANINE



**FIRST FLOOR**

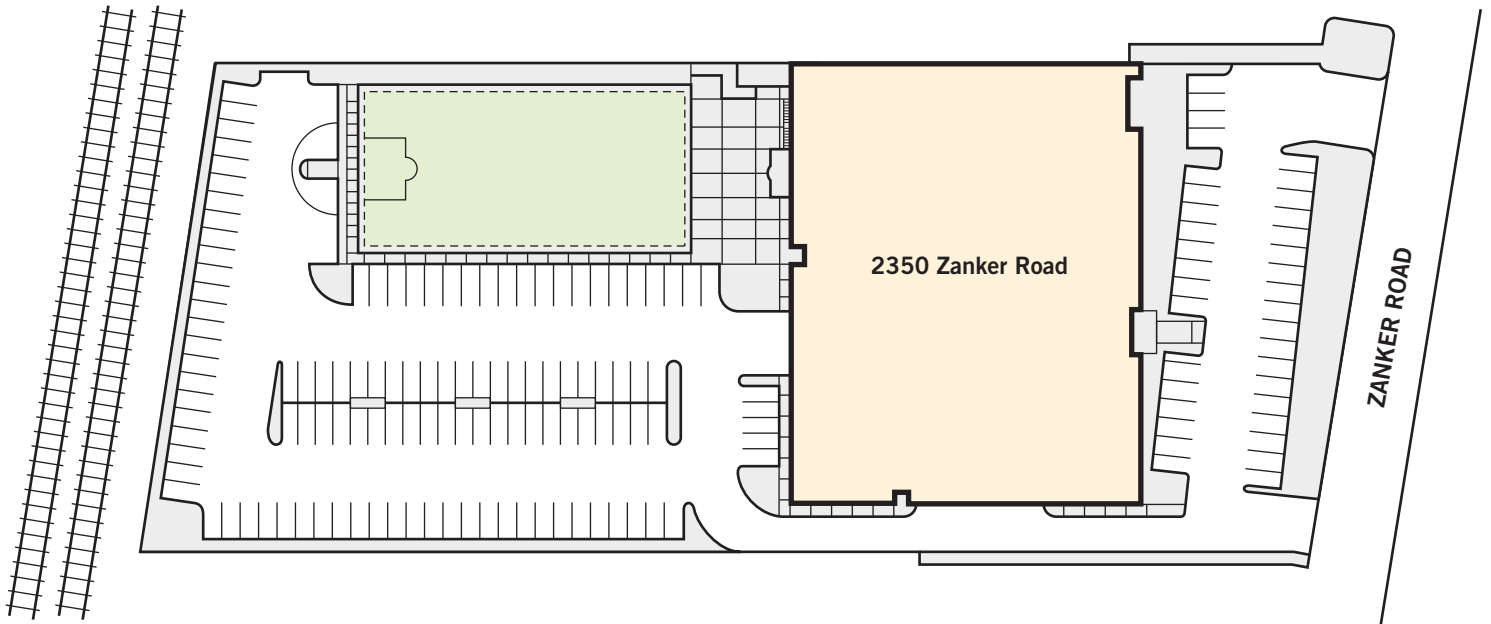


Floor plans may not be to scale.  
The information contained herein has been obtained from sources we deem reliable. We have no reason to doubt its accuracy, but we do not guarantee it. All information should be verified prior to lease.

**Dave Conklin · Geordie McKee** 650.321.3040  
Lic. 01036562 Lic. 01257296

# ±50,330 sq ft office/R&D building for lease

**2350 Zanker Road, San Jose**

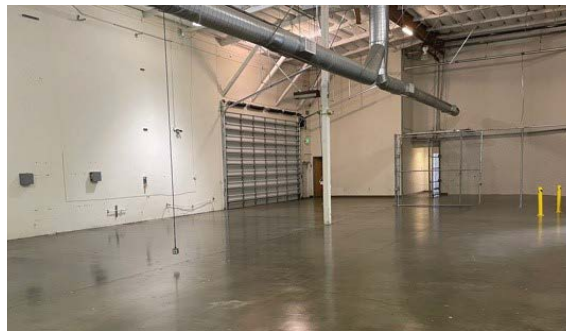
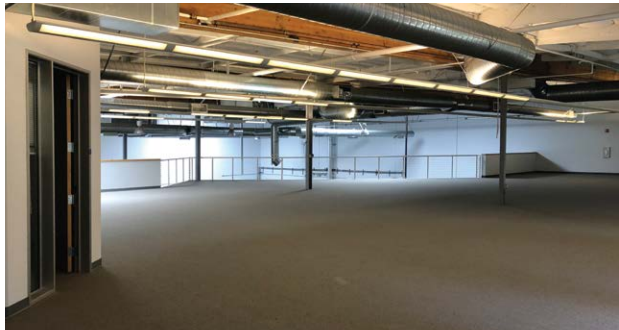


Floor plans may not be to scale.  
The information contained herein has been obtained from sources we deem reliable. We have no reason to doubt its accuracy, but we do not guarantee it. All information should be verified prior to lease.

**Dave Conklin · Geordie McKee** 650.321.3040  
Lic. 01036562 Lic. 01257296

# ±50,330 sq ft office/R&D building for lease

## 2350 Zanker Road, San Jose



Floor plans may not be to scale. The information contained herein has been obtained from sources we deem reliable. We have no reason to doubt its accuracy, but we do not guarantee it. All information should be verified prior to lease.

**Dave Conklin · Geordie McKee** 650.321.3040  
Lic. 01036562 Lic. 01257296