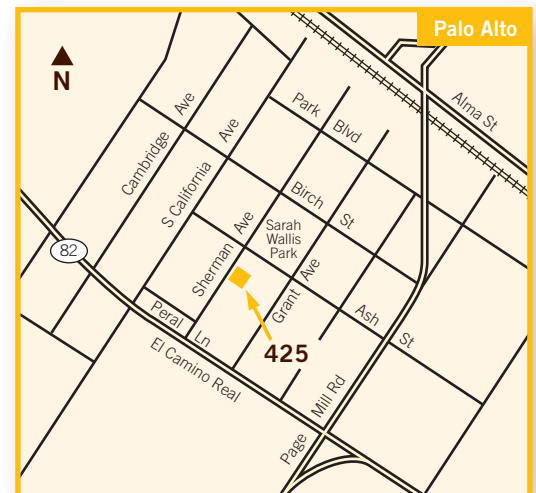




Up to 2,890 sf contiguous
(divisible to 1,063 & 1,827 sf)

425 Sherman Avenue, Palo Alto

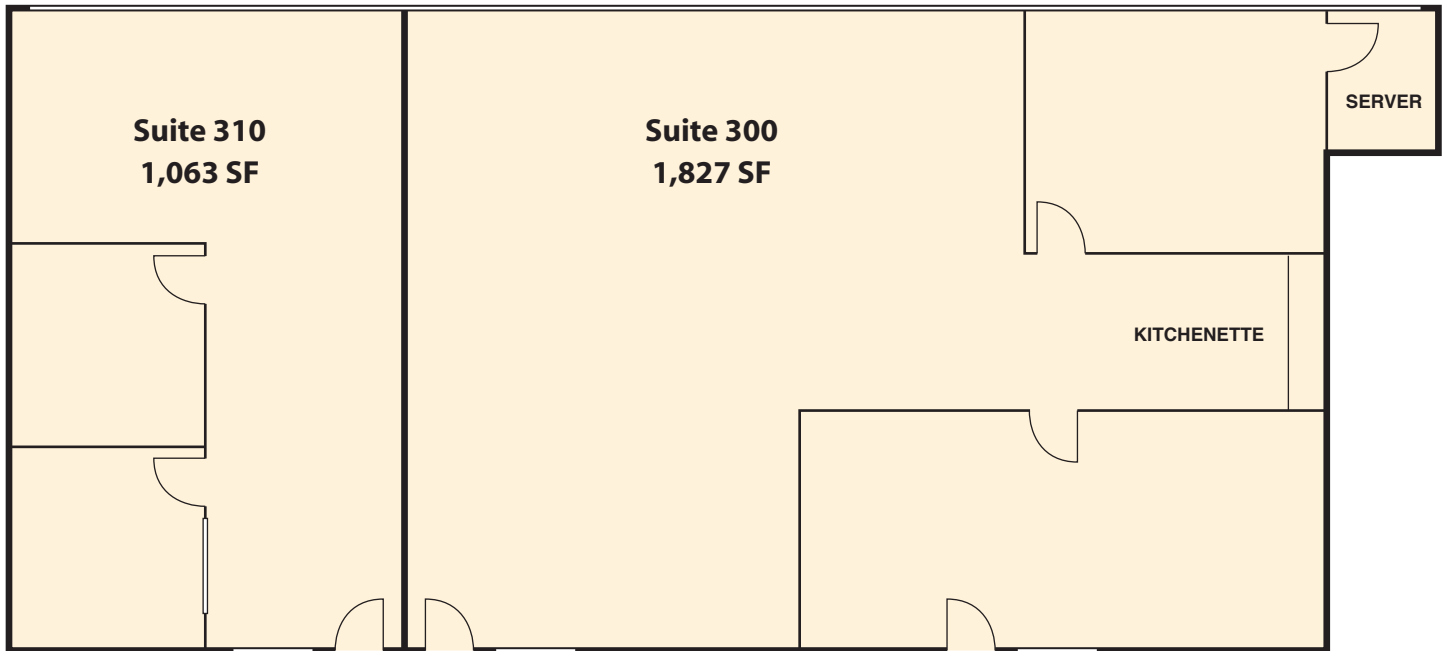
- **Full Service Lease**
- Just footsteps away from numerous retail and foodservice amenities on California Avenue
- Walk to CalTrain
- Adjacent to new 600+ stall public parking garage on Sherman Avenue
- Responsive local ownership and management
- Ideal for start-up companies
- Flexible lease term



Leonard Ely III · Dave Conklin 650.321.3040
Lic. 01412521 Lic. 01036562

Up to 2,890 sf contiguous
(divisible to 1,063 & 1,827 sf)

425 Sherman Avenue, Palo Alto



Floor plans may not be to scale.
The information contained herein has been obtained from sources we deem reliable. We have no reason to doubt its accuracy, but we do not guarantee it. All information should be verified prior to lease.

Leonard Ely III · Dave Conklin 650.321.3040
Lic. 01412521 Lic. 01036562