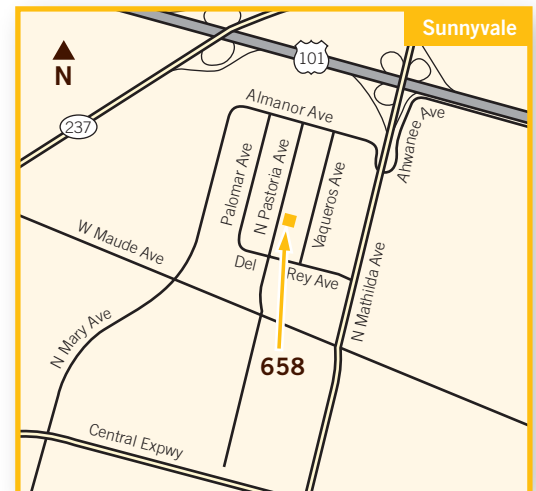




## ±10,560 sf R&D building 658 N. Pastoria Avenue, Sunnyvale

- Freestanding building
- ISO 8 Clean Room
- Ideal for medical device company
- Available immediately for direct lease
- 2 grade level doors
- 3/1000 parking
- 400 amps, 120/208 Volt
- 100% HVAC, drop ceiling



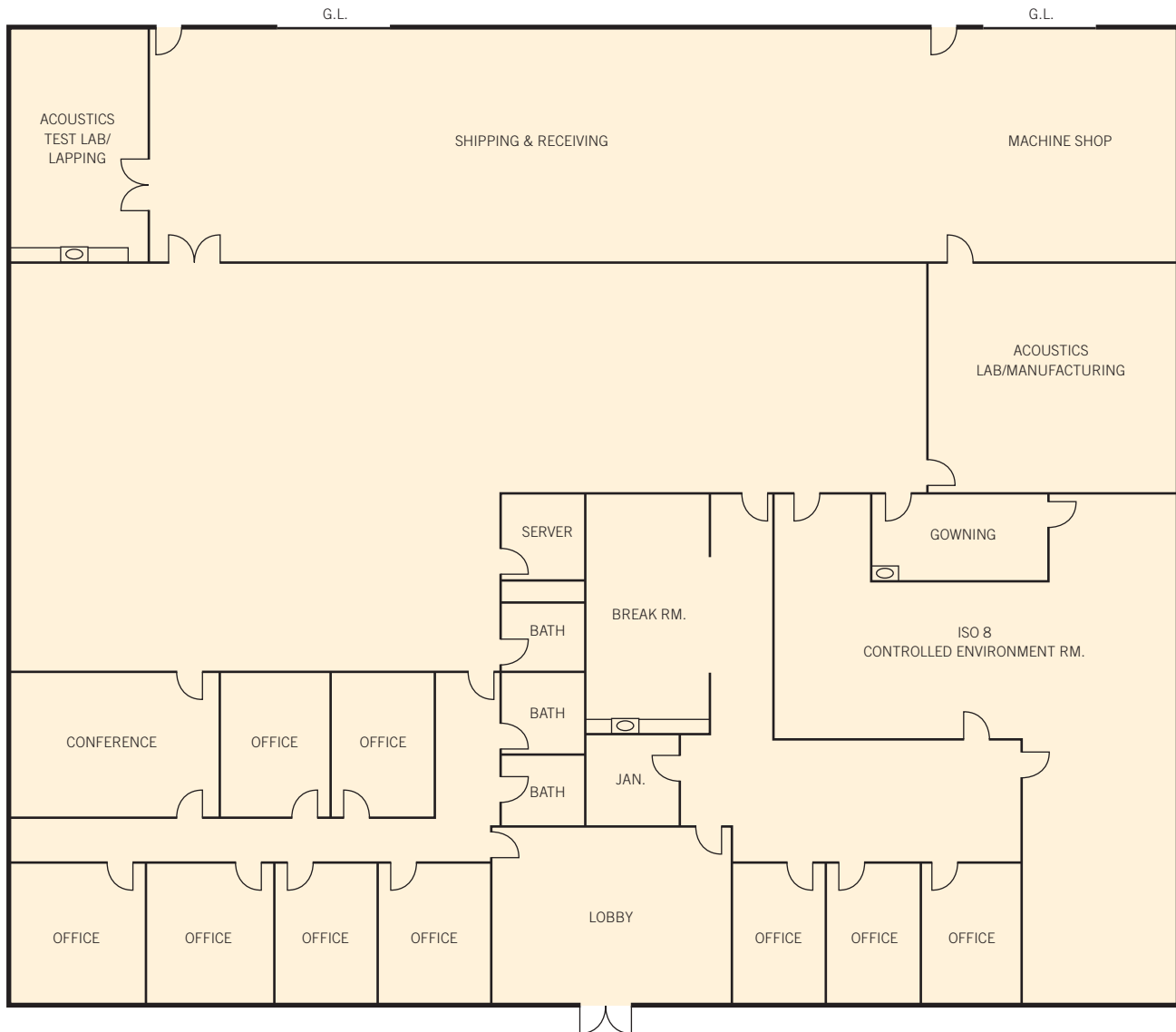
**Geordie McKee · Dave Conklin** 650.321.3040

Lic. 01257296

Lic. 01036562

# ±10,560 sf R&D building

658 N. Pastoria Avenue, Sunnyvale



Floor plans may not be to scale. The information contained herein has been obtained from sources we deem reliable. We have no reason to doubt its accuracy, but we do not guarantee it. All information should be verified prior to lease.

**Geordie McKee · Dave Conklin** 650.321.3040  
Lic. 01257296 Lic. 01036562