



Office/R&D manufacturing space Dumbarton Business Park, Central Avenue, Newark

- Excellent access to Dumbarton Bridge, Highways 84, 880 and 680
- High image single story brick design
- 3.4/1,000 parking

8440 Central Avenue, Suite A & B

- Office/mfg warehouse space
- ±2,800 sf
- ±225 amp, 3-phase (confirm prior to leasing)
- Sprinklered
- Dock door with ramp
- 100% HVAC
- Lease Rate: \$1.65 gross psf per month



Brian McCarthy

650.461.2209

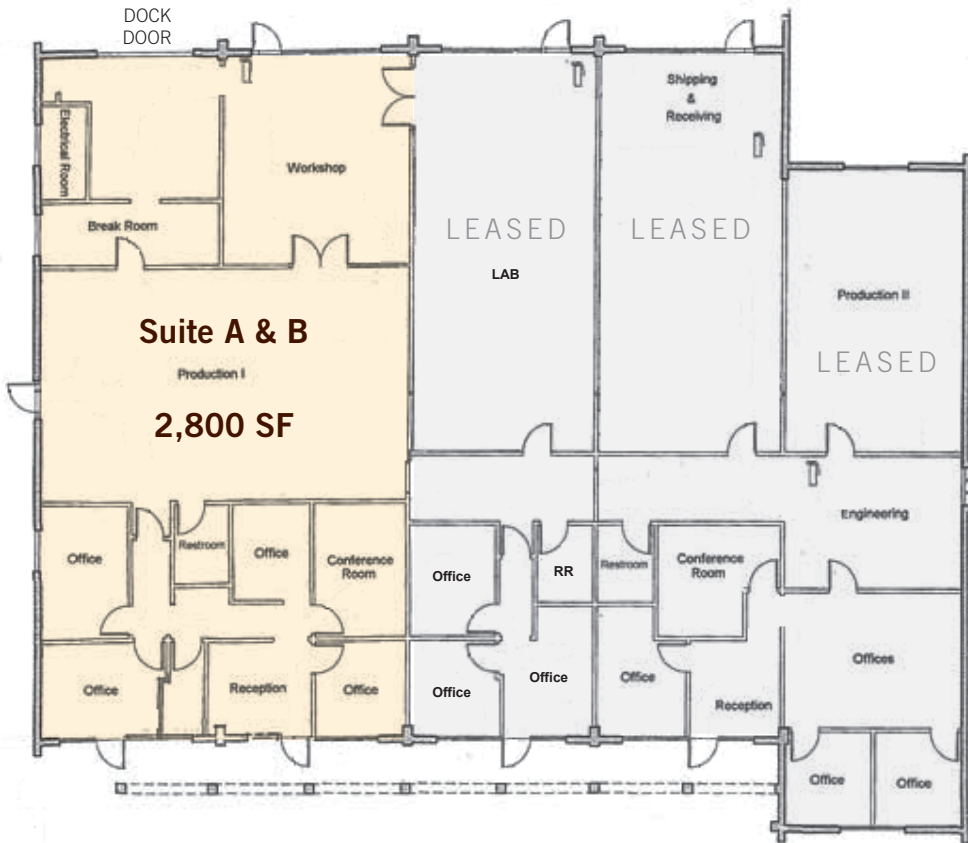
bmccarthy@renault-handley.com

Lic. 00766816

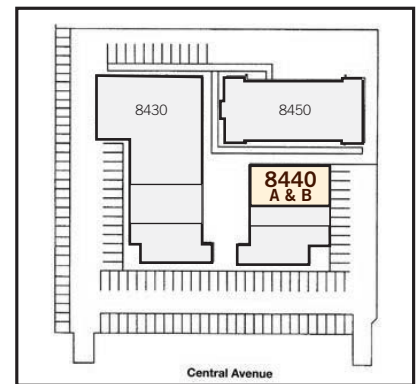
Office/R&D manufacturing space

Dumbarton Business Park, Central Avenue, Newark

8440 Central Avenue



Site Plan



Floor plans may not be to scale. The information contained herein has been obtained from sources we deem reliable. We have no reason to doubt its accuracy, but we do not guarantee it. All information should be verified prior to lease.

Brian McCarthy

650.461.2209

bmccarthy@renault-handley.com

Lic. 00766816