



±7,326 sq ft 3rd floor office

390 Lytton Avenue, Palo Alto

- Downtown Palo Alto Class A building
- Substantial TI allowance available
- Full 3rd floor penthouse with views
- Extensive window line
- 16 secure underground parking spaces
- Walk to Caltrain, restaurants and business services
- New lobby interiors
- New HVAC, roof, security system
- Fiber connection in building
- Available now
- Call to tour



Leonard Ely III

650.321.3040

lely@renault-handley.com

Lic. 01412521



**PREMIER
PROPERTIES**
COMMERCIAL
REAL ESTATE

Jon Goldman

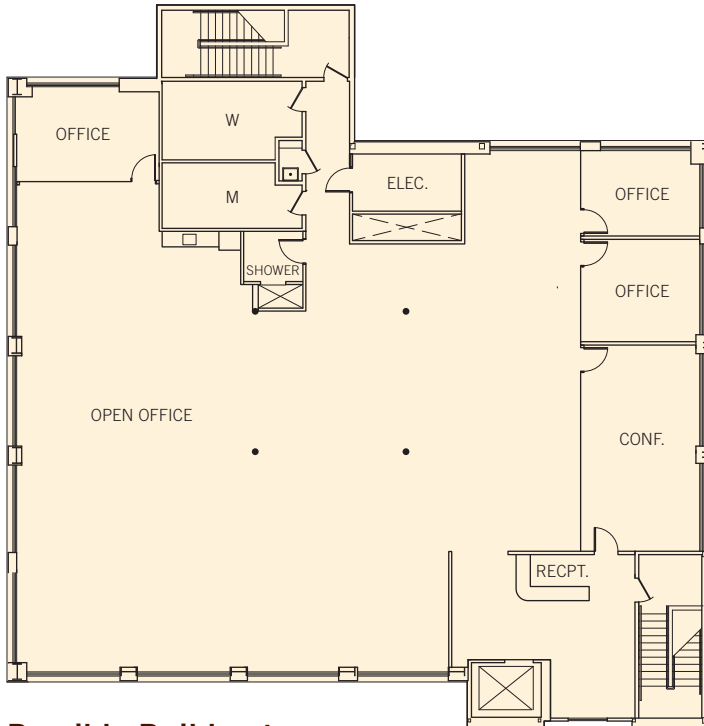
650.618.3003

jon.goldman@prprop.com

Lic. 01295503

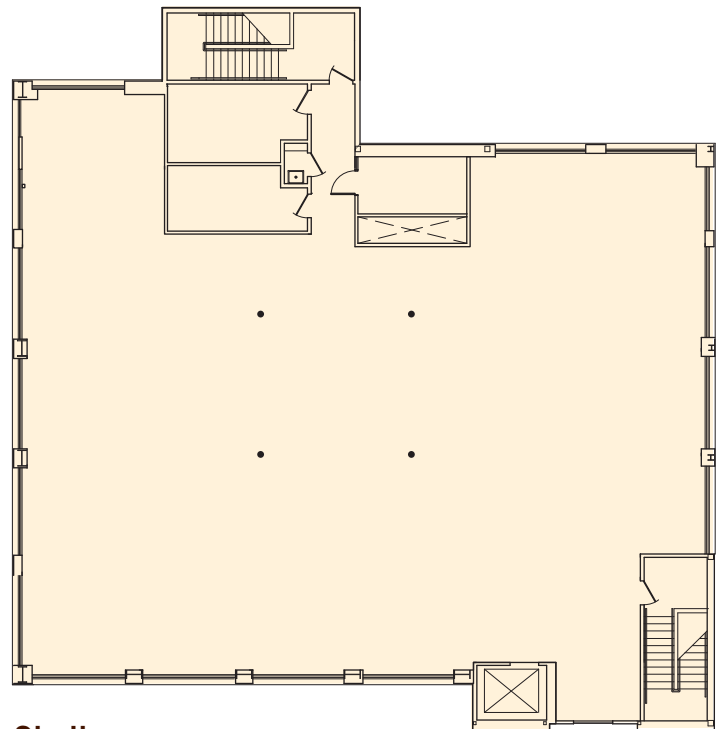
±7,326 sq ft 3rd floor office

390 Lytton Avenue, Palo Alto



Possible Build-out

[VIEW VIRTUAL TOUR](#)



Shell

Floor plans may not be to scale. The information contained herein has been obtained from sources we deem reliable. We have no reason to doubt its accuracy, but we do not guarantee it. All information should be verified prior to lease.