



±7,326 sq ft 3rd floor office 390 Lytton Avenue, Palo Alto

- Downtown Palo Alto Class A building
- New interiors
- Additional TI allowance available
- Full 3rd floor penthouse with 360° views
- Extensive window line
- Shower and changing area
- Kitchen with dishwasher and refrigerator
- 16 secure underground parking spaces
- Walk to Caltrain, restaurants and business services
- New lobby interiors
- New HVAC, roof, security system
- Fiber connection in building
- Low NNN
- Available now
- Call to tour

**Leonard Ely III**

650.321.3040

lely@renault-handley.com

Lic. 01412521

**PREMIER
PROPERTIES**
COMMERCIAL
REAL ESTATE**Jon Goldman**

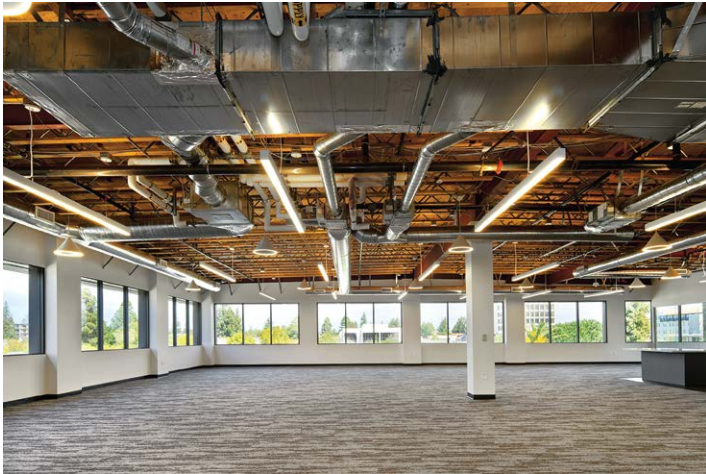
650.618.3003

jon.goldman@prprop.com

Lic. 01295503

±7,326 sq ft 3rd floor office

390 Lytton Avenue, Palo Alto



±7,326 sq ft 3rd floor office

390 Lytton Avenue, Palo Alto



Floor plans may not be to scale. The information contained herein has been obtained from sources we deem reliable. We have no reason to doubt its accuracy, but we do not guarantee it. All information should be verified prior to lease.

