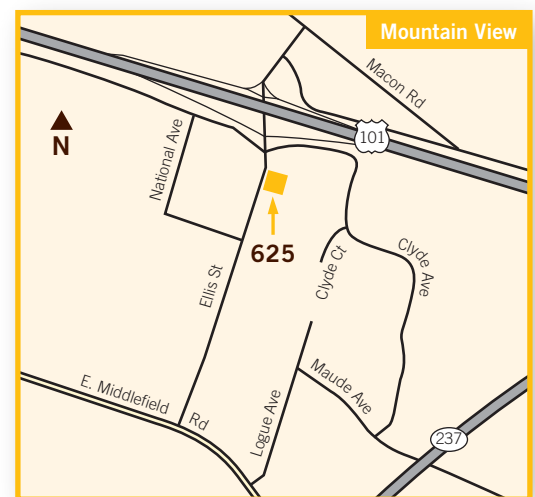




## Mountain View office space for lease

625 Ellis Street, Suite 301, Mountain View  
±3,576 sq ft available

- Abundant natural light
- Glass-walled privates and conference room
- Server closet with dedicated air
- Kitchenette
- Shower and locker facilities in building
- Immediate access to 101
- 4.33/1,000 sf parking ratio
- Walk to VTA light rail and MVGo Shuttle to Caltrain
- AT&T Business Fiber and WiLine wireless broadband services available
- Specialty's Café & Bakery and Peet's Coffee on site
- Full service lease
- Available immediately

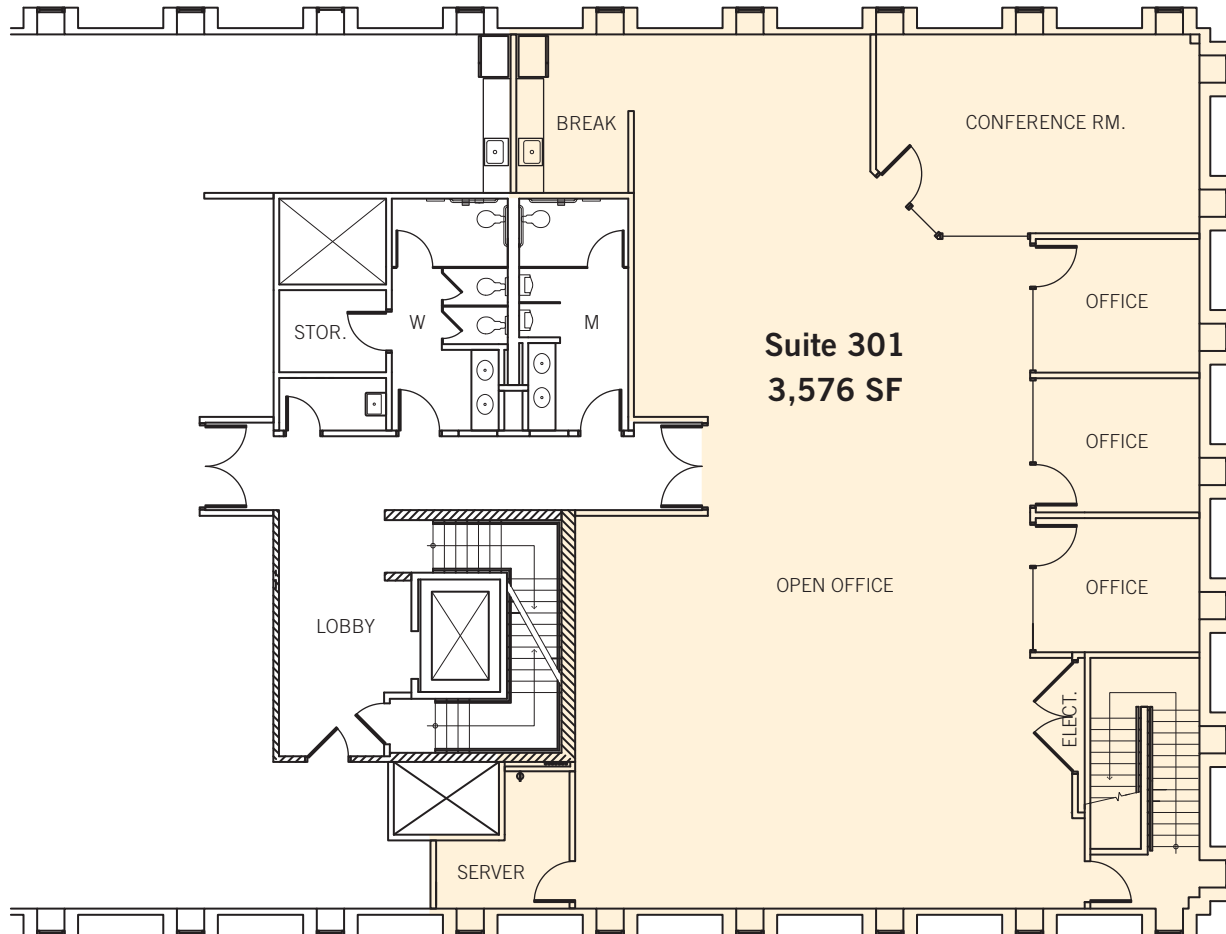


**Dave Conklin · Geordie McKee** 650.321.3040  
Lic. 01036562 Lic. 01257296

## Mountain View office space for lease

625 Ellis Street, Suite 301, Mountain View

±3,576 sq ft available



Floor plans may not be to scale. The information contained herein has been obtained from sources we deem reliable. We have no reason to doubt its accuracy, but we do not guarantee it. All information should be verified prior to lease.

**Dave Conklin · Geordie McKee** 650.321.3040  
Lic. 01036562 Lic. 01257296