

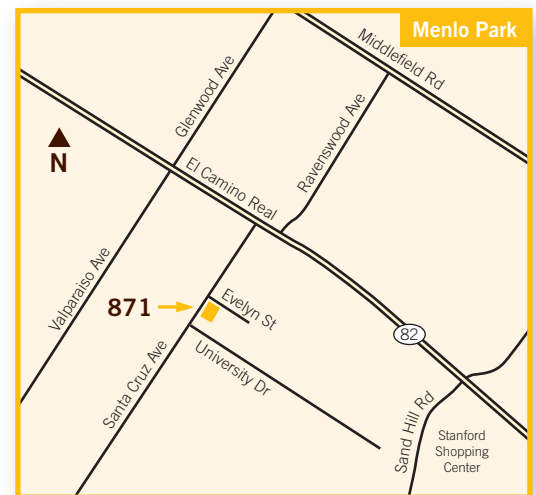


Premier downtown Menlo Park retail for lease

871 Santa Cruz Avenue, Menlo Park

±7,003 sq ft (not divisible)

- Rare full ground floor high-profile identity
- Corner location with expansive frontage and windowline on three sides
- Prominent building signage opportunities
- Storefronts on Santa Cruz Avenue and City parking lot
- Located in the heart of the Menlo Park Design District
- Ideal for design galleries, showrooms, and furniture or appliance stores



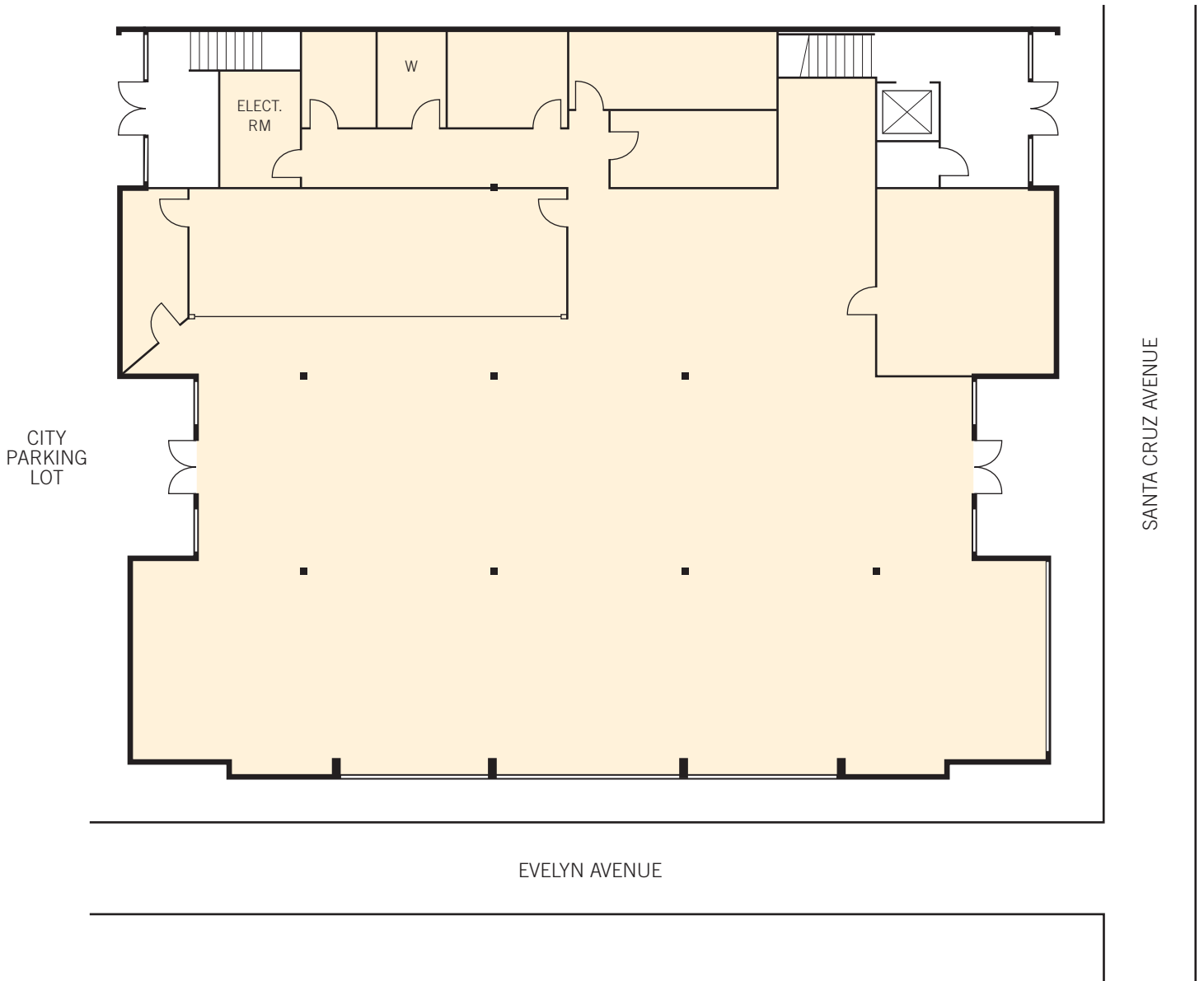
MPD
MENLO PARK DESIGN DISTRICT
www.mpdesigndistrict.com

Geordie McKee · Dave Conklin 650.321.3040
Lic. 01257296 Lic. 01036562

Premier downtown Menlo Park retail for lease

871 Santa Cruz Avenue, Menlo Park

±7,003 sq ft (not divisible)



Floor plans may not be to scale. The information contained herein has been obtained from sources we deem reliable. We have no reason to doubt its accuracy, but we do not guarantee it. All information should be verified prior to lease.

Geordie McKee · Dave Conklin 650.321.3040
Lic. 01257296 Lic. 01036562